



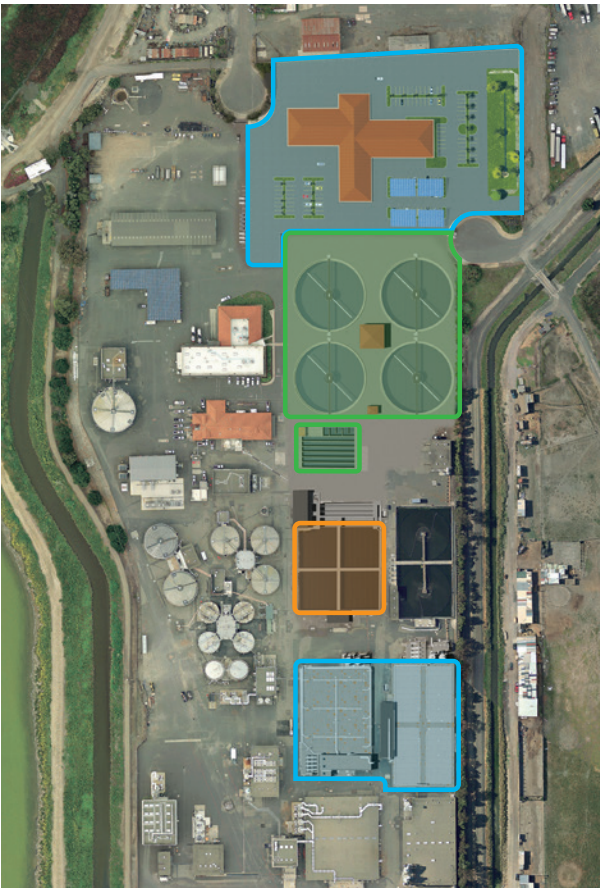
RESIDENTIAL RATES COLLECTION POSTPONED

Serving the Tri-Cities, Union Sanitary District manages a large collection of facilities including 839 miles of sewer lines, seven pump stations, and the buildings and equipment at the Union City Wastewater Treatment Plant. The District is responsible for operating, maintaining, and replacing over \$681 million in assets.

Although USD’s infrastructure has been well-maintained over the years, major components of the 33-acre treatment plant are functionally obsolete, will be unable to treat wastewater to meet changing government requirements, or do not meet current seismic standards. As the provider of an essential service that protects public health, the District is mandated by state and federal requirements to maintain its infrastructure to avoid failures, minimize service disruptions, and protect the environment.

USD’s rate increases are the product of studies and thorough evaluations of infrastructure investment needs initiated in 2015, long before the COVID-19 crisis. These evaluations were discussed at numerous public Board meetings and workshops with the primary goal of utilizing existing assets to their fullest extent to decrease construction costs and reduce impacts on rates.

After considering a comprehensive rate study and the necessity for critical capital improvements over the next 10 years, conducting significant outreach including a virtual public hearing, and reviewing public comments, USD’s Board of Directors adopted an ordinance to raise rates for Fiscal Years 2021 through 2025. Recognizing current economic uncertainty, the Board adopted a resolution deferring collection of Fiscal Year 2021 residential rate increases until Fiscal Year 2022.



USD’s Enhanced Treatment and Site Upgrade (ETSU) Phase 1 Projects

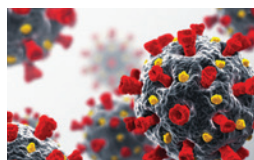
- Phase 1A
Campus Building
Aeration Basin Modifications
- Phase 1B
Secondary Clarifiers
Effluent Facilities
- Phase 1C
Plant Equalization Storage



Courtesy Notice
Page 2



ETSU Program Update
Page 2



Wastewater Epidemiology
Page 3



Did You Know?
Page 3



USD’s Spill Record
Page 4

COURTESY RATE ADJUSTMENT AND RESIDENTIAL FEE DEFERRAL NOTICE:

FISCAL YEAR 2021 SEWER SERVICE RATES

On May 11, 2020, the District's Board of Directors held a public hearing and adopted Ordinance 31.40, which established sewer service charges for Fiscal Years 2021 through 2025. Prior to the public hearing, the District participated in a public workshop and mailed a notice of the public hearing and informational brochure to all property owners in our service area. On May 26, 2020, the Board adopted a resolution deferring Fiscal Year (FY) 2021 fee increases for all residential customers until FY 2022. This means that residential customers will not have to pay the

approved increase for FY 2021, which is \$33.20 for single-family residences and \$35.26 for multi-family residences, until FY 2022. That amount will be collected in FY 2022, along with the sewer service charge for that year.

Annual Sewer Service Charges are placed on the Alameda County property tax statement. The charges appear on the tax statement as a single line item and are listed as "Union Sewer Svc". Sewer Service Charges are not a property tax and are not related to the assessed value of a property. They represent a charge for a service provided.

USD includes the annual charges on property tax statements to save the administrative cost of generating and mailing separate invoices. The table below depicts last year's rates, the new rates for FY 2021, and the charges for FY 2021 with the fee deferral in place. If you have questions or would like to opt out of the fee deferral, call USD at (510) 477-7500 or email: rates@unionsanitary.ca.gov by December 10, 2020. Opting out would require payment of the FY 21 residential fee increases detailed above directly to USD.

	Last Year's Rate	FY 2021 adopted rates	Rates to be collected with Fall 2020 property taxes	Rates to be collected with Fall 2021 property taxes
Residential (\$ per Dwelling Unit)				
Single Family Residences	\$421.37	\$454.57	\$421.37	\$524.13
Multiple Family Residences*	\$365.32	\$400.58	\$365.32	\$467.89
Commercial (\$/1,000 gallons)				
Strong	\$10.64	\$12.53	\$12.53	\$13.53
Moderate	\$5.25	\$6.06	\$6.06	\$6.54
Weak	\$4.37	\$5.08	\$5.08	\$5.49
Fast-Food Restaurant	\$9.95	\$12.62	\$12.62	\$13.63
Full-Service Restaurant	\$13.18	\$12.64	\$12.64	\$13.65
Industrial				
Volume (\$1,000 gals.)	\$2.48	\$2.99	\$2.99	\$3.22
COD (\$/1,000 lbs.)	\$328.24	\$338.87	\$338.87	\$365.98
Suspended Solids (\$/1,000 lbs.)	\$763.48	\$909.90	\$909.90	\$982.69
Minimum Charge for non-residential customers	\$365.32	\$400.58	\$365.32	\$467.89

*Examples of multiple family residential dwelling units include condominiums, townhomes, and apartments. USD's Fiscal Year is defined as July 1 through June 30.

ENHANCED TREATMENT AND SITE UPGRADE (ETSU) PROGRAM UPDATE

USD developed the Enhanced Treatment and Site Upgrade (ETSU) Program to upgrade and bring infrastructure up to current standards and to address impending regulatory requirements and capacity needed to meet the General Plans of the Cities we serve. The Program is a roadmap for the treatment plant's infrastructure over the next 40 years. Design of the first group of projects is underway. These include improvements to the aeration basins and relocation of operations, maintenance, and administrative facilities. Construction of Phase 1 projects is expected to begin in late 2021 and last through 2027. Read more about the ETSU program at unionsanitary.ca.gov/etsu.

WASTEWATER BASED EPIDEMIOLOGY

THE NEW FRONTIER OF PUBLIC HEALTH: COVID-19 IN WASTEWATER



Wastewater Based Epidemiology (WBE) is the science of collecting and analyzing untreated sewage at wastewater treatment plants for substances related to aspects of public health. Comparing results over time and across locations can enable researchers to map trends and differences. WBE has been used to effectively study the presence of polio and hepatitis A and could be used as a tool to monitor the COVID-19 pandemic.

However, testing and data analysis related to COVID-19

is in its infancy and needs to be coordinated before truly meaningful results may be relied upon. While it is believed that signs of the virus can show in human waste as soon as two days after a person is infected, not everyone infected sheds the virus in the same way. Furthermore, those with COVID-19 can continue to shed evidence of the virus after it has become inactive and it is not yet known how many viral genes survive the journey from a toilet to a wastewater treatment plant. For these reasons, it is not

yet possible to use the presence of COVID-19 in wastewater to estimate how many people are infected. More work must be done to ensure comparable results, standard method guidelines, timely notifications, and consistent data interpretation before large-scale testing will provide the greatest benefits.

USD is a member of a joint powers authority known as Bay Area Clean Water Agencies (BACWA). USD and BACWA members are working to develop a region-wide coordinated approach to utilization of WBE and are monitoring progress as studies and research lead toward consistent methods that could assist in protection of public health. USD supports the concept and looks forward to the adoption of a commonly agreed-upon approach that provides the most useful information for all stakeholders.

DID YOU KNOW?

JUST BECAUSE SOMETHING CAN GO DOWN THE DRAIN, DOESN'T MEAN IT SHOULD

- **Coffee grounds don't break down in water and wash away** like most other foods do when ground in a garbage disposal. They clump together and, over time, they can build up inside your sink drains, creating clogs that may lead to messy backups. Always dispose of coffee grounds in your compost or green bin.
- **Pouring garden chemicals into a storm drain, household drain, or toilet pollutes water and is prohibited.** Take unwanted pesticides and chemicals to Fremont's Household Hazardous Waste facility at 41149 Boyce Road for FREE disposal to Alameda County residents, or check stopwaste.org for additional locations.

Find USD on
Social Media



USD posts tips for keeping your sewer healthy and protecting the environment on our Facebook page and @usdtweets, plus news about our activities in the Tri-Cities. **Follow us for online info.**

UNION SANITARY DISTRICT

5072 Benson Road
Union City, CA 94587-2508

PRESORTED
STANDARD
US POSTAGE
PAID
SACRAMENTO, CA
PERMIT NO 333

ECR WSS

AVOIDING SEWER OVERFLOWS: USD'S EXCELLENT RECORD

California's wastewater agencies are required to track and report all overflows from their collection systems to the State Water Resources Control Board. This information is known as an agency's "spill record". Union Sanitary District has one of the best records statewide for avoiding overflows or "spills". The graph below shows USD's average spill record for FY 2020 vs. state and regional averages.

Spills are categorized by the amount of overflow, whether they reach surface waters (in USD's case, any body of water that

flows to the Bay such as storm drains, flood control channels, creeks, or wetlands), and whether an agency can "capture" the spill through containment, washdown, and reclaiming the water. Category 1 overflows are 1,000 gallons or more that reach surface waters and are not fully captured by the agency. Category 2 overflows are 1,000 gallons or more that do not reach surface waters and are not fully captured. Category 3 overflows are 1,000 gallons or less, do not reach surface waters, and are fully captured. USD's FY 2020

spill record notes the District's only overflows were in Category 3, totaling 0.12 overflows per 100 miles of pipeline, all under 1,000 gallons, and fully captured by USD. The District is proud that its collection system inspection, cleaning, and maintenance work has resulted in an exemplary record for many years.

BOARD OF DIRECTORS

Tom Handley, President
Fremont

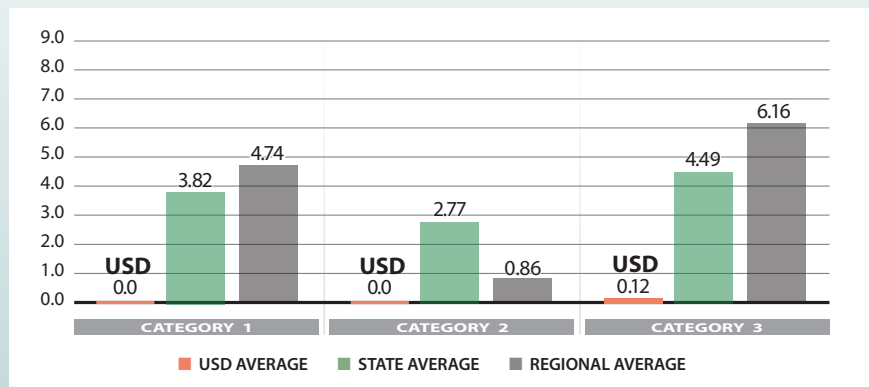
Manny Fernandez
Union City

Pat Kite, Vice-President
Newark

Jennifer Toy
Fremont

Anjali Lathi, Secretary
Fremont

FY 2020 Spills Per 100 Miles of Pipe USD vs. State and Regional Averages



Spill Rate Statistics – Fiscal Year 2020 (July 1, 2019 – June 30, 2020) • Spills per 100 Miles of Pipe

	Category 1	Category 2	Category 3
USD AVERAGE	0.0	0.0	0.12
STATE AVERAGE	3.82	2.77	4.49
REGIONAL AVERAGE	4.74	0.86	6.16

EXECUTIVE MANAGEMENT

Paul Eldredge
General Manager

Mark Carlson
CFO/Business Services Manager

Sami Ghossain
Technical Services Manager

Armando Lopez
Treatment & Disposal Services Manager

James Schofield
Collection Services Manager

Robert Simonich
Fabrication, Maintenance, & Construction Manager

UNION SANITARY DISTRICT

(510) 477-7500

contactusd@unionsanitary.ca.gov

Printed on recycled paper